

# Hi! PARiS

PARIS ARTIFICIAL INTELLIGENCE FOR SOCIETY



ENST2



***Hi! PARiS Engineering Team***

# Engineering Team – Our team and Our experience

8

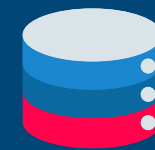
## Engineers working on open-source projects

Various profiles (PhD, Data Engineer, industrial and academic experience)

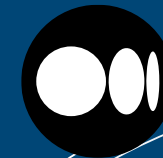
• Scripts and Notebook



• Data Collection



• Blog Post



15

Packages

50

Projects

NLP

Graph Machine Learning

Computer Vision

Deep Despeckling

Generative Network

Econometrics

AnomalyDetection

Deep Learning

Robotics

Optimal Transport

Text to Speech

Image Segmentation

Dimensionality Reduction

Media Analysis

# Engineering Team - Our offer

Projects originate from **external requests**, **internal initiatives**, or **partnerships**.  
Here are the **main sources** by type:



## ACADEMIC RESEARCH PROJECT

**Request** from a **researcher** (email, website, event)

**Outreach** by the team

**Call for projects** initiated by the team (1-page max)



## INNOVATION PROJECT

Support for **partner startups**

Guidance for researchers toward **entrepreneurship /startups**



## CORPORATE RESEARCH PROJECT

**Corporate donor project** (pro bono, chair, etc.)

Project with a **partner company**

Request for **technological watch** or state of the art



## EDUCATION PROJECT

Support for **Hi! PACE / Data Event**

**One-off course creation** (on request)





## What we do

**Course production** (from beginner to advanced-intermediate level)

Package **development, structuring**, architecture, and MVP creation

**Data processing**: preprocessing, cleaning, model application,  
clustering, model development

**Data generation**, benchmarking, and Generative AI

Technical **note writing, tech watch**, and state-of-the-art research

**Design of courses** or innovative learning platforms

**Model training** on computing infrastructures

**Startup mentoring** and skills development



## What we don't

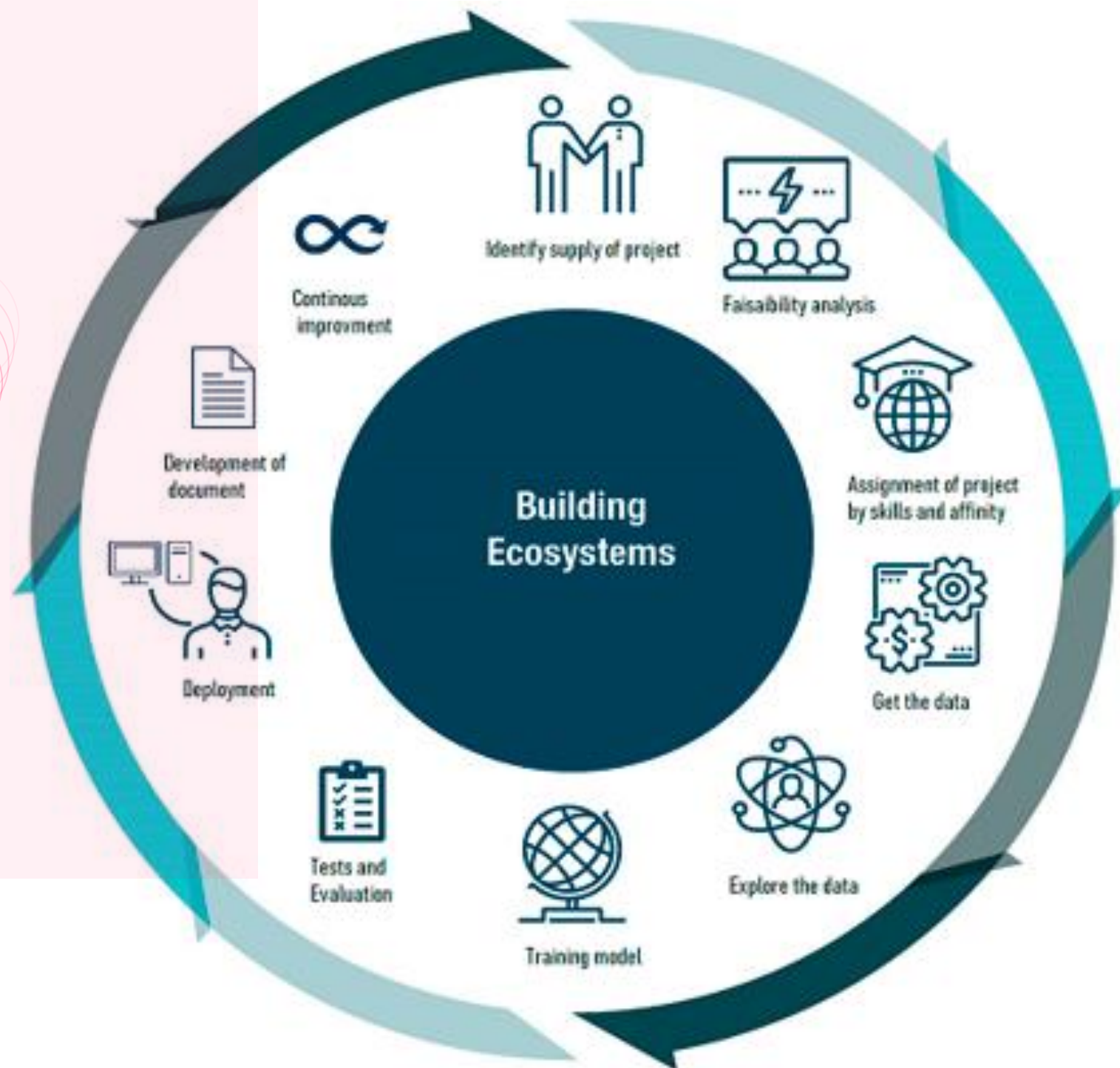
**Full-scale** software development

**Front-end development** (CSS, Streamlit,  
etc.)

Streamlit / RShiny apps **without an  
upstream data project**

Web scraping **without a downstream  
data use case**

# Engineering Team - Our mission



3-6 MONTHS of ML/AI support



OPEN-SOURCE projects and community

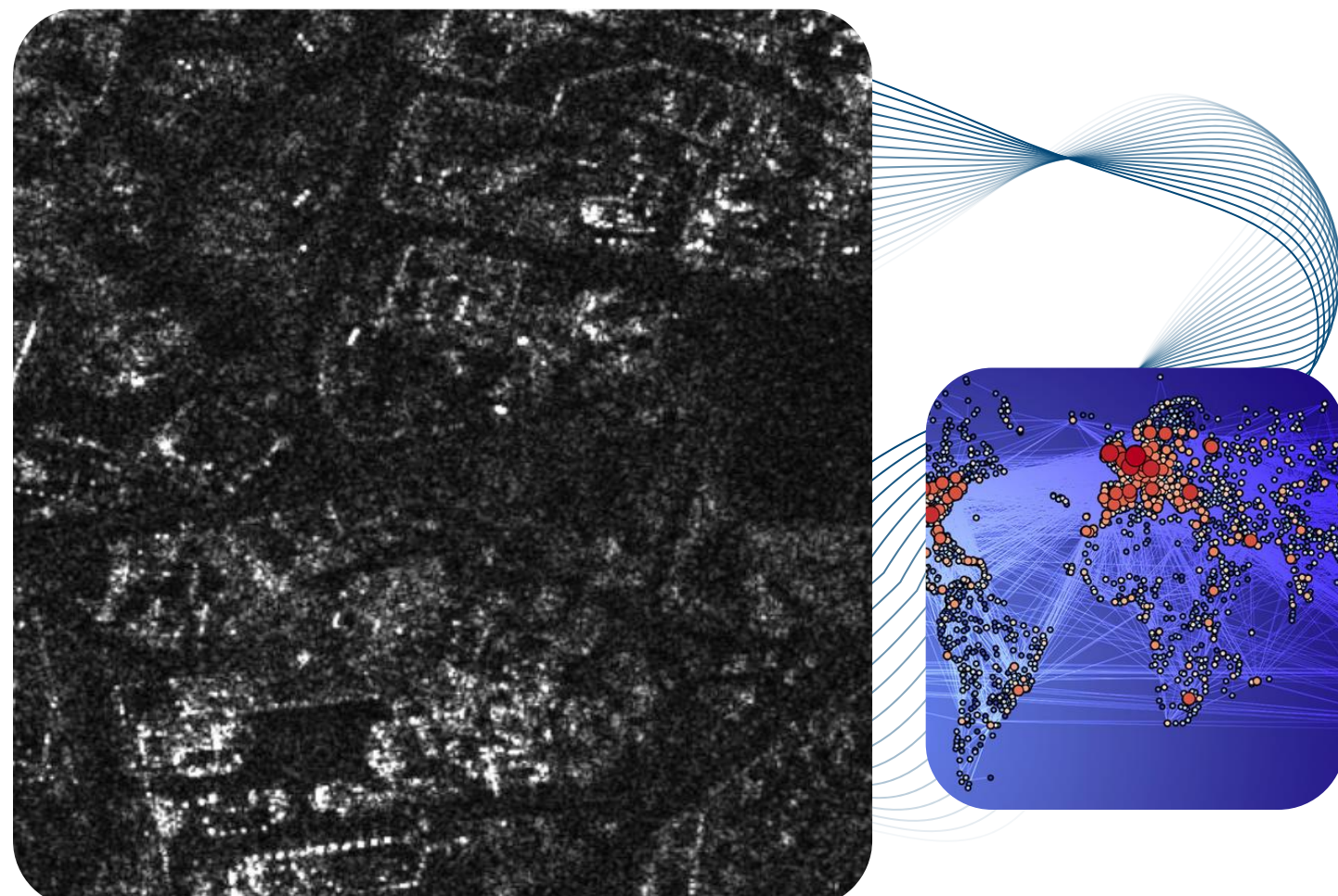
In return, we simply ask for:

Acknowledgment in the researcher's publications or code

Communication on social media

Participation in **one event**





# Our Communication Strategy

## From research to teaching and beyond

App for teaching services

---

Articles in journals

---

Breakfast for researchers

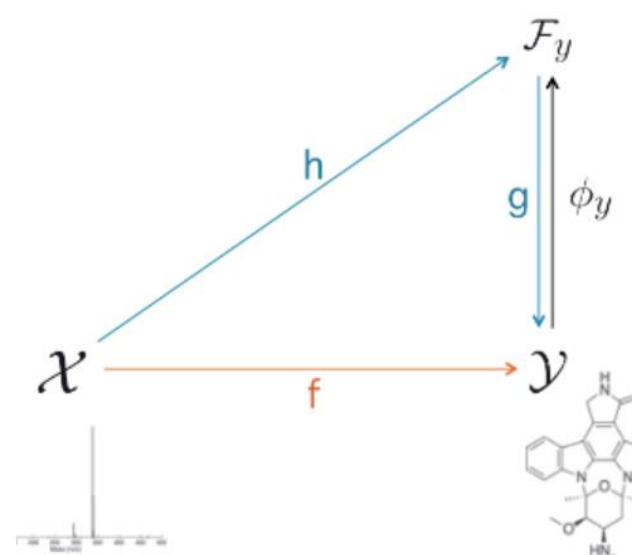
---

Video **Demonstrations**

---

Tutorial / Medium **Articles**

---





# Thank You

We look forward to collaborating with you!



+33 6 36 93 00 85



[contact@hi-paris.fr](mailto:contact@hi-paris.fr)



Campus Telecom Palaiseau 5A102

Campus HEC Paris S107 (Tuesday)